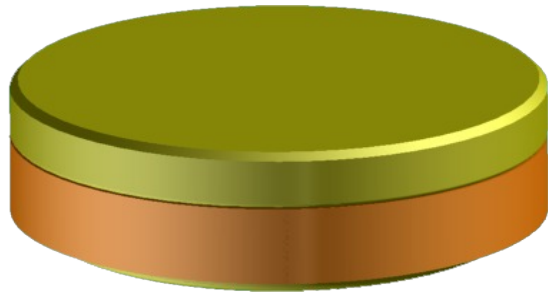
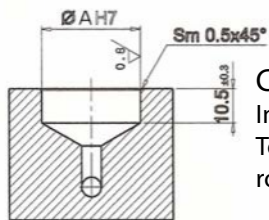


Locking Tablets PSL Type Max Working Pressure 250 bar



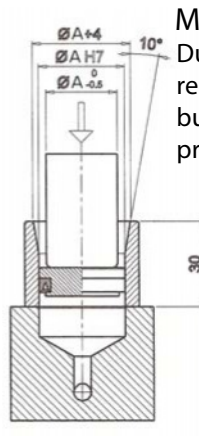
Description and applications

- Used for truck and slide locking
- High efficiency and immediate close
- In case of lack of pressure, they concur a very low friction during sliding
- Easy mounting and small dimensions
- Place in centers of easy execution



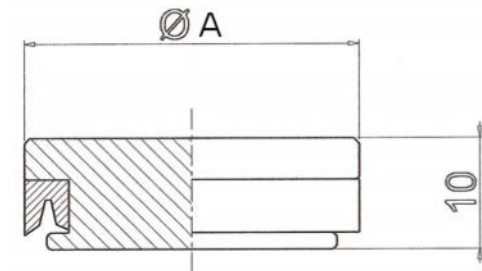
Center dimensions

In phase of execution centers, be careful at the Tolerance on the diameter and at the roughness of cylindrical surface.

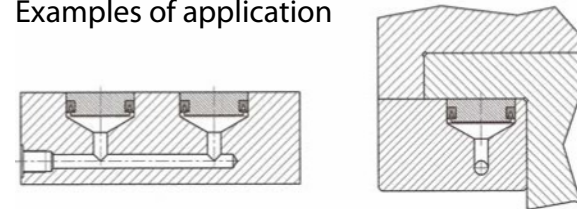


Mounting instructions

During mounting the use of bushing as above showed is recommended, so lubricate the slide, introduce it softly into the bushing, center it on the placing and push it by a punch, by producing the insertion of the slide.



Examples of application



Model	Diameter A	Surface area cm ²	Force at 250 bar kN
PSL.22	22	3.79	9.4
PSL.30	30	7.06	17.6
PSL.32	32	8.03	20.1