

PNEUMO-HYDRAULIC POWER UNIT

« NEW GENERATION »



ENERFLUID

Inescapable player for more than 15 years with its range of pneumo-hydraulic cylinder, **ENERFLUID** presents you its new series of unity of Power NG "New Generation"

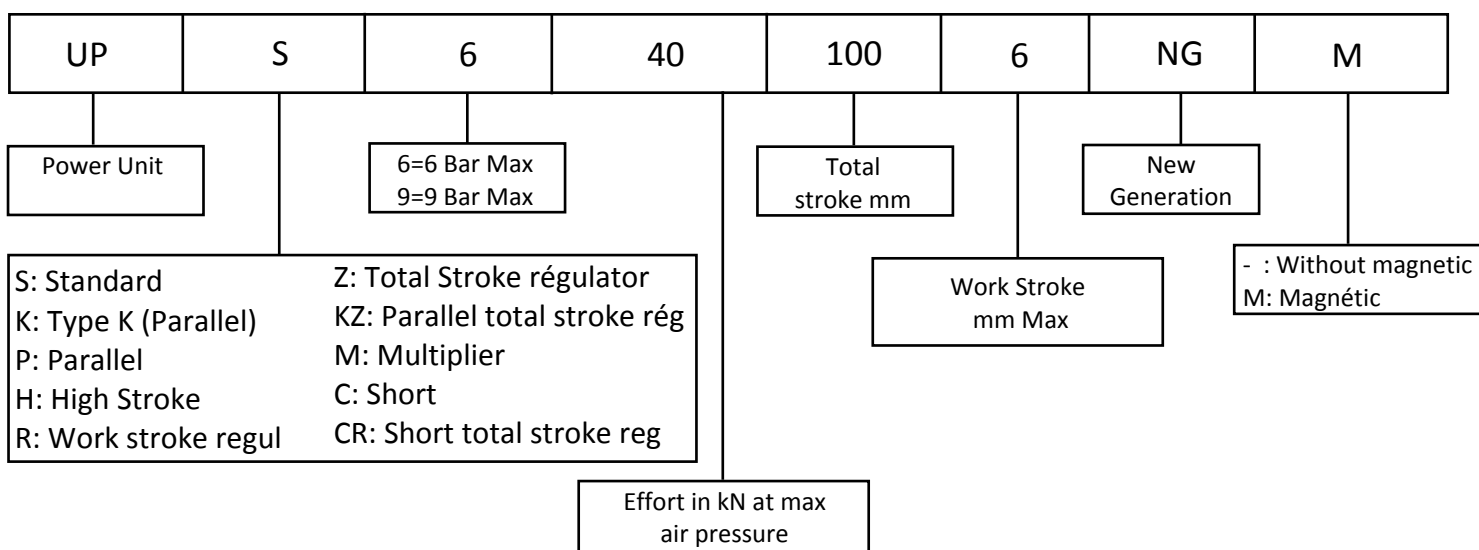
General Characteristics

- Exclusively pneumatic energy
- Absence of return mechanical spring
- High speed in approaching and return
- Automatic and temporised control or work stroke program in any point on piece
- Possibility of work force regulation on cylinder
- Absolute separation between air and oil
- Check-coupling for pressure control and measuring
- Assembly in any position
- Possibility Magnetic version
- 8 Forms in choices
- Guarantee for 10 million cycles within 12 months without work-shift restriction

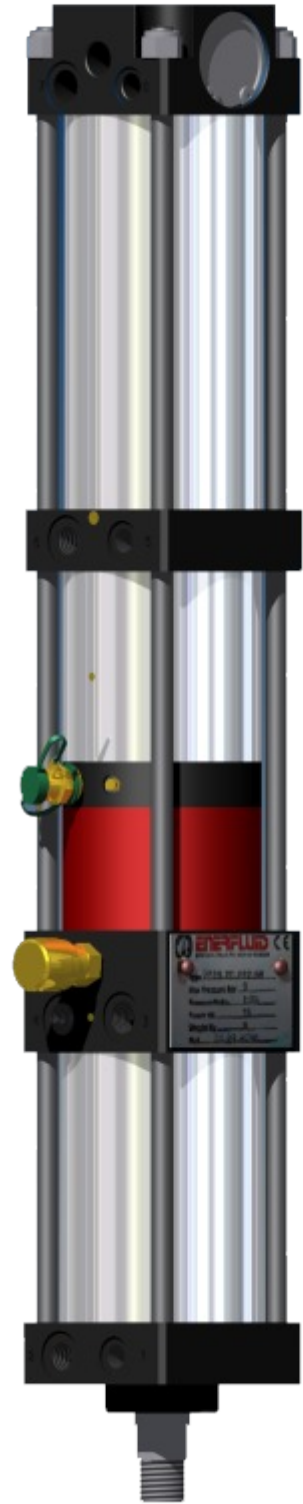
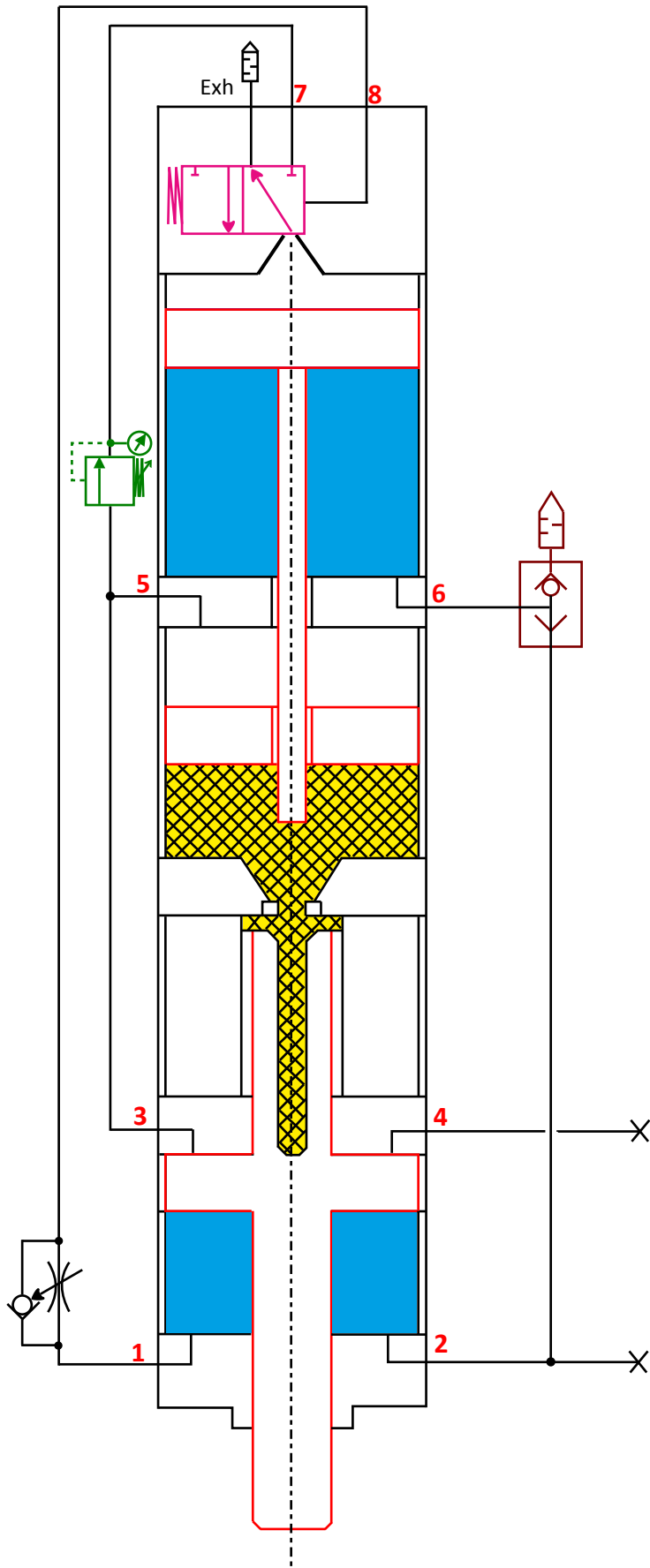
Additional Characteristics for the new Generation

- Improvement of the oil circulation for obtaining of higher cadences
- Possibilities of combined cycles : Approach stroke-Work Stroke-Release Stroke
- Possibility rearmament on Work stroke in every respect
- External supply of the regulator of regulation of working pressure (See Option)
- Sequence valve integrated into the cylinder (UP20,40,80,150)
- Easy transformation of the old models.
- Pressure of use on cylinder from 1 to 6 bar (Version 6 bar) or 1 to 9 bar (Version 9 bar)

Key to code

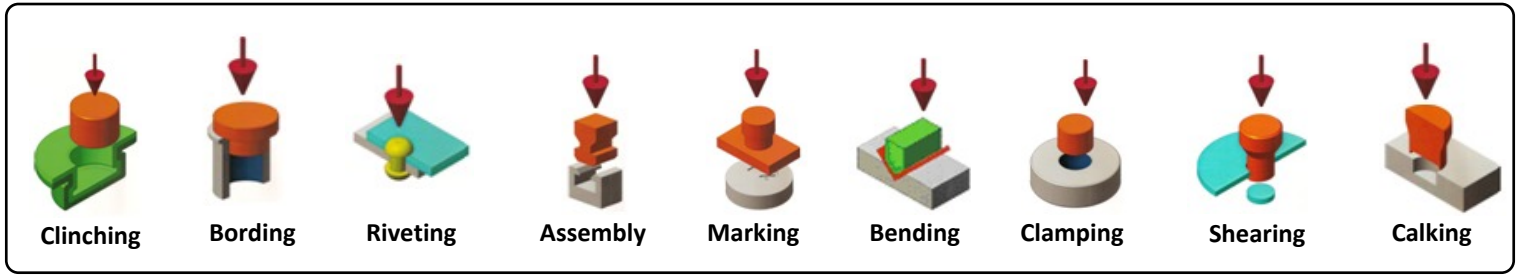


Principe Plan



- X Limit of supply
- Option Regulation of the Power
- Quick exhaust valve
Only version 80-150
- Compressed Air
- Oil
- Mobile Part

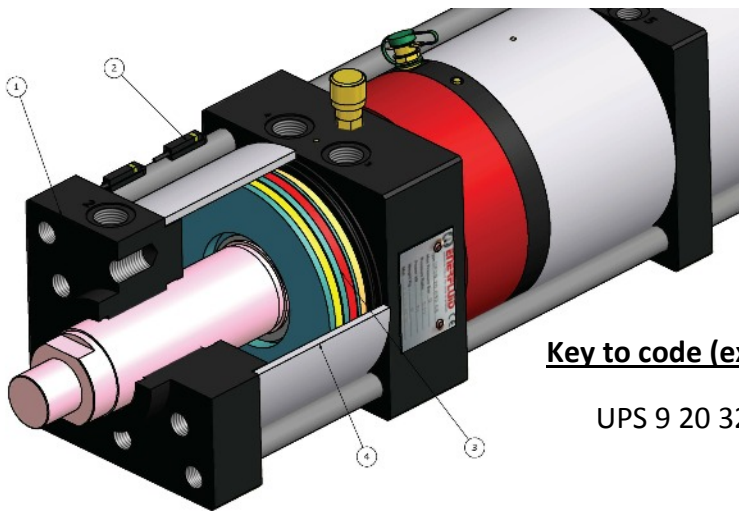
Applications



Options:

Magnetic Version M

Principe: A magnet is associated to piston rod which is detected by sensors, through the chamber made of stainless steel.



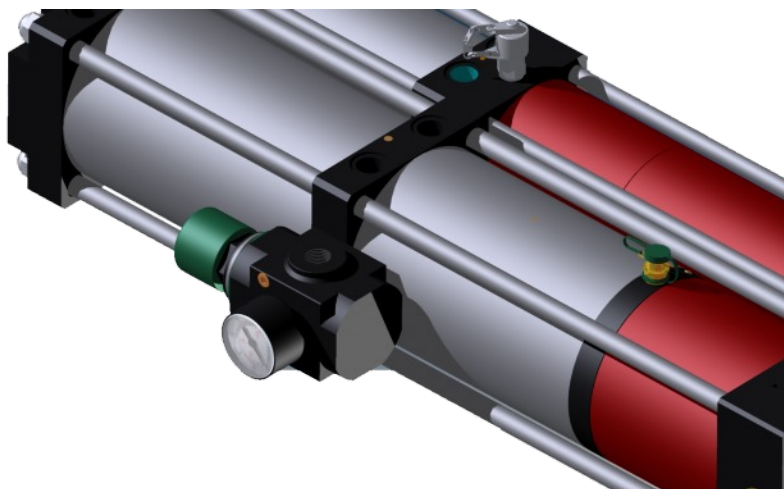
1. Cylinder Head
2. Magnetic sensor
3. Piston rod with magnetic ring
4. Aluminium tube

Key to code (example)

UPS 9 20 32 6 EM

— : Without magnet
M: With magnet

Regulation Work effort independent



For the particular applications requiring an important pneumatic effort:

- In approach for the compression of springs, clamping etc. ...
- In return for the lifting of heavy tools, the dévêtissage etc. ...

It is possible to feed in a external way the sequence valve (Hole 7).

En option, a pressure regulator can be flanged on the cylinder for a better regulation of the Work Effort. It is recommended to plan this option for cylinder working in **6 MAXI** bars to protect any whole overpressure.