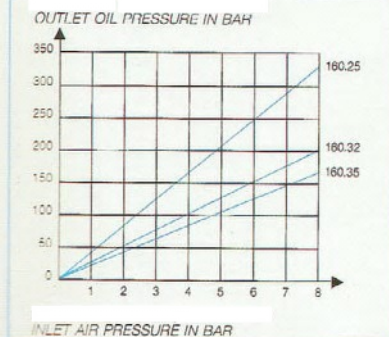


PRESSURE MULTIPLIERS TYPE 160



CURVE

DIAGRAM



APPLICATIONS:

Any application requiring the transfer of a capacity of oil determined in high pressure.

PNEUMATIC COMMAND:

H Opening G3/8 for version simple effect (RM)

H/H' Opening G3/8 for version double effet (RP)

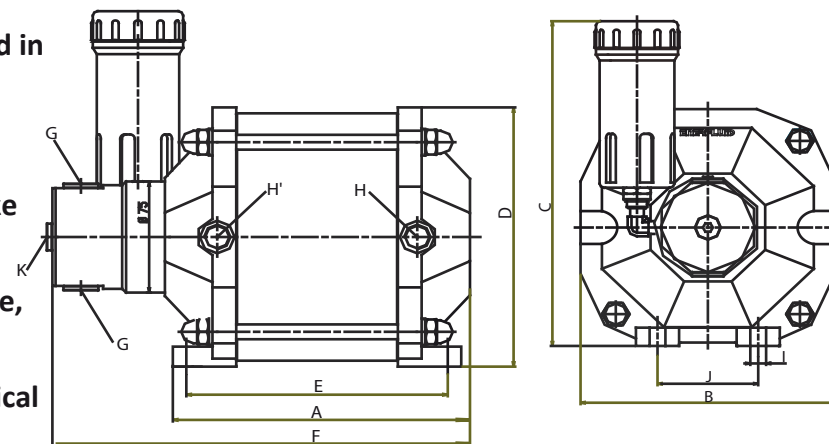
it is recommended to choose the double effect when we look a stake In the rest frank.

HIGH PRESSURE HYDRAULIC

K opening (G1/4) intended mainly for the control (taken by pressure, Manometer, G Opening (G3/8) of power

MAJORITIES:

Assembly in all the position with reservoir of compensation (L) vertical or separated from multiplier.



Model	Type of return		Pressure Ratio	Oil Pressure		Oil flow per stroke cm ³	DIMENSIONS									
	RM	RP		8 bars	6 bars		A	B	C	D	E	F	G	H	I	J
160.25.05	X		1/41	328	246	22	177	240	175	165	260	G3/8	G3/8	12	70	G1/4
160.25.15						71				280	265					
160.32.05			1/25	200	150	37	177	240	175	165	260	G3/8	G3/8	12	70	G1/4
160.32.15						117				280	265					
160.35.05			1/21	168	126	44	177	240	175	165	260	G3/8	G3/8	12	70	G1/4
160.35.15						140				280	265					
160.25.05	X		1/41	328	246	18	177	240	175	165	260	G3/8	G3/8	12	70	G1/4
160.25.15						67				280	265					
160.32.05			1/25	200	150	30	177	240	175	165	260	G3/8	G3/8	12	70	G1/4
160.32.15						110				280	265					
160.35.05			1/21	168	126	36	177	240	175	165	260	G3/8	G3/8	12	70	G1/4
160.35.15						132				280	265					

Under reserves of technical modifications