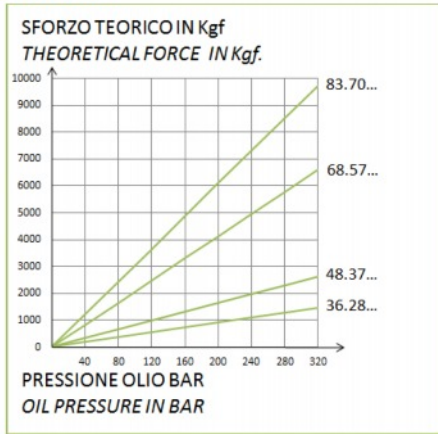


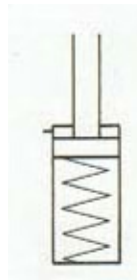
Traction Cylinders-Threaded outside-Spring return



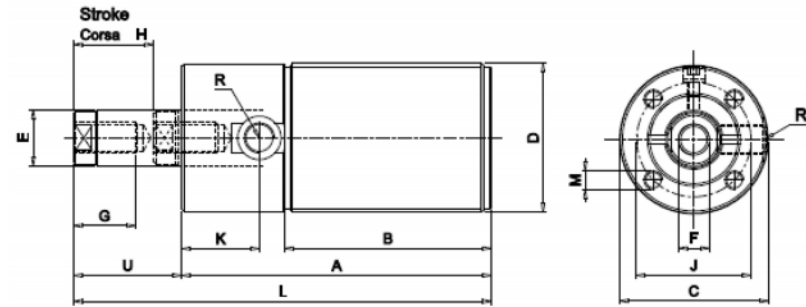
DIAGRAMMA
DIAGRAM



SYMBOL



In these cylinders the piston moves inwards and exercises a traction force. For easy assembly, apart from the threaded body, there are 4 threaded holes for flange attachment. These cylinders are used in equipping conventional, NC or transfert machines. They can be mounted in any position individually or in series and are controlled by pressure multipliers or pneumatic pumps.



Model	Force at 320 bar kN	Stroke in mm H	Oil Volume cm ³	Pistone area cm ²	Dimensions											
					A	B	C	D	E	F	K	J	L	M	U	R
36.28.10	14.70	10	4.62	4.62	83	46	36	M36x1.5	14	M8x15	28	28	103	M6x10	20	G1/8
36.28.25		25	11.55		98	61							133		35	
48.37.10	26.24	10	8.2	8.2	85	53	48	M48x1.5	18	M10x20	25	37	105	M6x12	20	G1/8
48.37.25		25	20.5		100	68							135		35	
68.57.10	65.95	10	20.61	20.61	100	58	68	M68x2	25	M14x20	32	50	120	M8x15	20	G1/4
68.57.25		25	51.52		115	72							150		35	
83.70.10	97.4	10	38.5	30.44	115	84	83	M38x2	32	M22x1.5	17	65	137	M10x20	22	G1/4

Under reserves of technical modifications