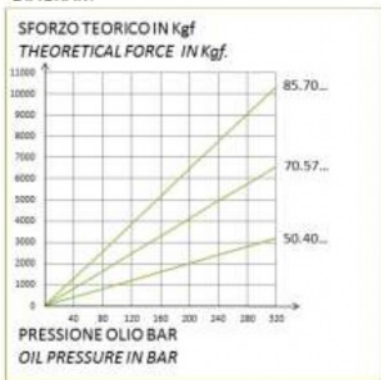


Smooth Clearance Bore Cylinders Smooth Outside Spring Return

Diagram

DIAGRAMMA
DIAGRAM



Description:

Thrust or traction locking cylinder with smooth clearance bore for the insertion of easily adjustable pins or threaded tie rod.

Used in systems where thrust or traction is required

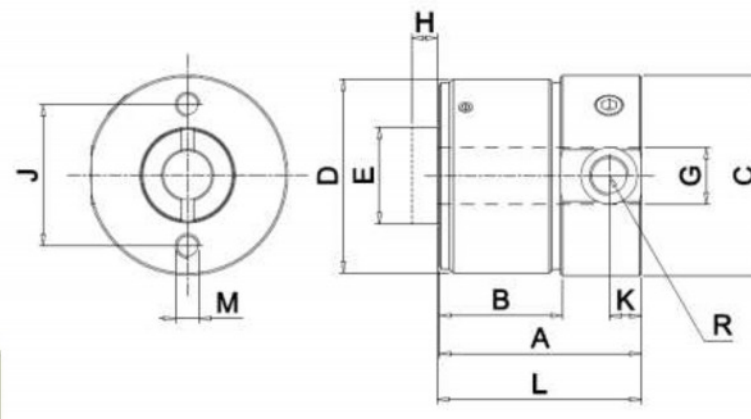
For thrust applications, insert shaped heads in the central hole

For rear securing, use holes at the bottom of the cylinder.

Can be mounted in multiple groups and any position

Normally controlled by pressure multipliers or hydraulic control units.

SYMBOL



Model	Force at 320 bar KN	Stroke H mm	Oil Volume cm ³	Area Piston cm ²	Dimensions								
					A	C	E	G	J	K	L	M	R
50.40.06	32.06	6	6.01	10.02	50	50	24	12	35	8	50.5	M6x9	G1/8
50.40.12		12	12.02		60						60.5		
70.57.06	65.92	6	12.36	20.6	52	70	35	18	50	8.5	52.5	M8x10	G1/8
70.57.12		12	24.72		80					10.5	80.5		G1/4
85.70.06	103.39	6	19.38	32.31	62	85	40	20	50	10.5	62.5	M8x10	G1/4
85.70.12		12	38.76		80						80.5		

Under reserves of technical modifications