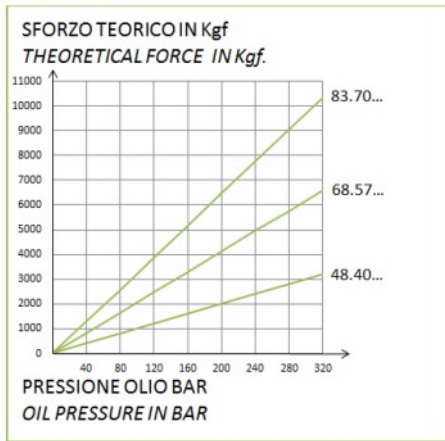


Threaded Clearance Bore Cylinders Threaded outside- Spring Return

Diagram

DIAGRAMMA
DIAGRAM



Description:

Thrust or traction locking cylinder with threaded clearance bore for the insertion of easily adjustable pins or threaded tie rod.

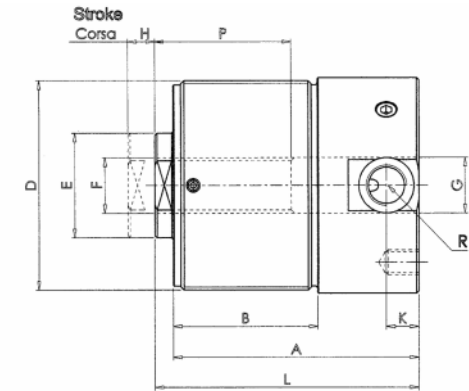
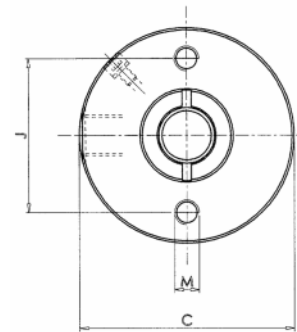
Threaded outside.

Used in systems where thrust or traction is required.

For the applications, insert shaped heads in the central hole. For rear securing, use holes at the bottom of the cylinder. Can be mounted in multiple groups and in any position.

Normally controlled by pressure multipliers or hydraulic control units.

SYMBOL



Model	Force at 320 bar Kn	Stroke H mm	Oil Volume cm ³	Piston area cm ²	Dimensions												
					A	B	C	D	E	F	G	J	K	L	M	P	R
48.40.06	32.06	6	6.01	10.02	50	30	50	M48x1.5	24	M12	12	35	8	56	M6x9	22	G1/8
48.40.12		12	12.02		60	40								66			
68.57.06	65.92	6	12.36	20.6	52	30	70	M68x1.5	35	M18	18	50	8.5	58	M8x10	22	G1/8
68.57.12		12	24.72		80	45							10.5				
83.70.06	103.39	6	19.38	32.31	62	35	85	M83x2	40	M20	20	50	10.5	68	M8x10	27	G1/4
83.70.12		12	38.76		80	45							86				

Under reserves of technical modifications