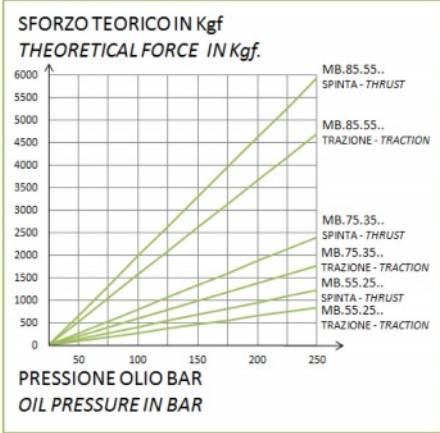


Dual-Action Monobloc Cylinders (250 bar)



Diagram

DIAGRAMMA
DIAGRAM

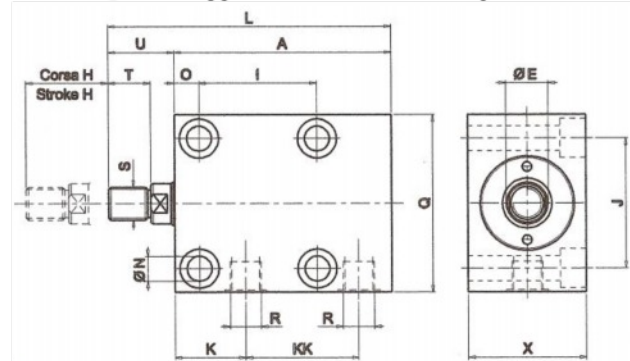


Description:

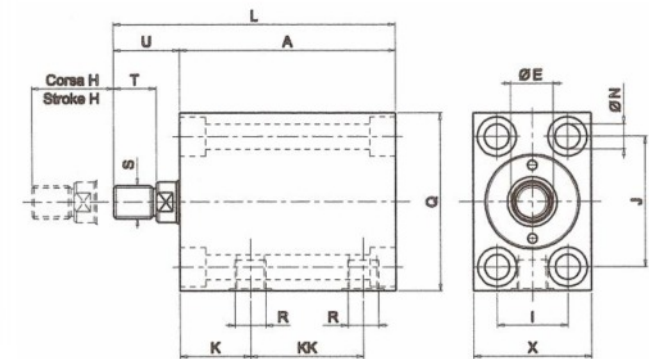
Dual-action cylinders with compact shape and front and side fastening holes for easy applications to toolings and dies.

These cylinders can be mounted in any position and use, (clamping, pressing, riveting Operation) and can be mounted on dies, controlled by hydraulic units or pneumatic pumps

Ⓛ = fissaggio laterale *side fastening*



Ⓐ = fissaggio anteriore *front fastening*



NB: The rib O is valid only for the model L

Model	Force at 250 bar kN		Stroke mm H	Oil Volume cm3		Pistone area cm2		Dimensions														
	Thrust	Traction		Thrust	Traction	Thrust	Traction	A	E	I	J	L	N	O	Q	S	T	U	X	K	KK	R
MB 55.25.15 A	12.25	8.4	15	7.35	5.05	4.9	3.37	86	14	20	40	109	6.5	10	55	M10X1.25	14	23	35	27.5	48.5	G1/8
MB 55.25.25 A			25	12.25	8.42			96													119	58.5
MB 75.35.15 A	24.05	17.70	15	14.4	10.62	9.62	7.08	92	18	30	55	120	10.5	10.5	75	M14X1.5	18	28	50	30	48	G1/8
MB 75.35.25 A			25	24.05	17.7			102													130	58
MB 85.55.15 A	59.37	47.12	15	35.62	28.27	23.75	18.85	110	25	50	75	147	13	11	96	M20X1.5	25	37	72	31	62	G1/4
MB 85.55.15 A			25	59.37	45.62			120													157	72

Under reserves of technical modifications