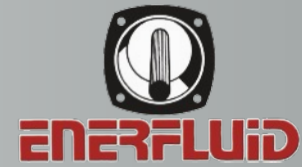
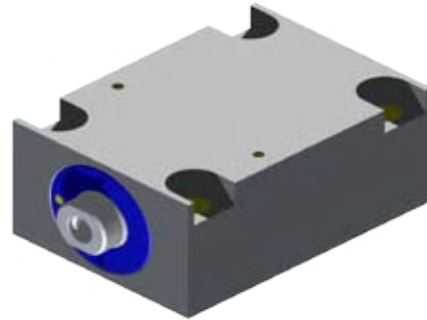
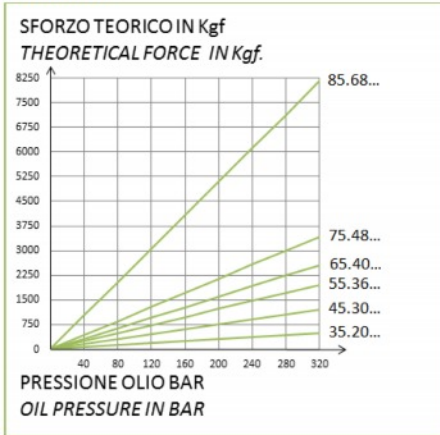


Compact Cylinders - Spring Return (320 bars)



Diagram

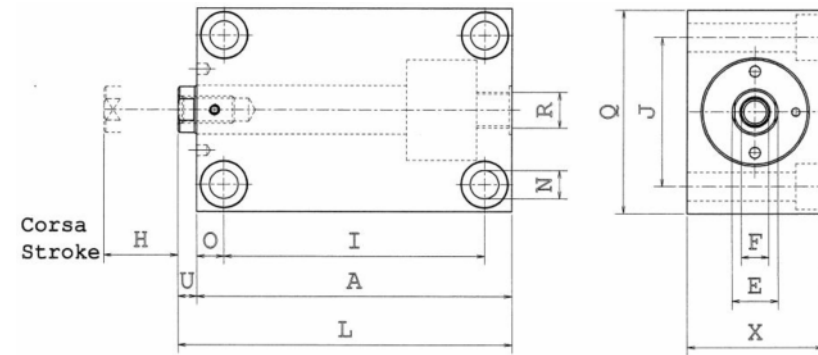
DIAGRAMMA
DIAGRAM



Description:

Thrust cylinder with threaded bore and compact shape with fixing holes for easy applications. These cylinders can be mounted in any position and are used for locking, pressing and riveting operations.

They can be mounted individually or in series and controlled by pressure multipliers or central hydraulic control units for keeping working pressure automatically constant.



Model	Force at 320 bar kN	Stroke H mm	Oil Volume cm ³	Pistone area cm ²	Dimensions											
					A	E	F	I	J	L	N	O	Q	U	X	R
35.25.15	4.89	15	2.3	1.53	67	10	M5X10	56	24	73	4.5	5.5	35	6	20	G1/8
45.30.15	12.12	15	5.7	3.79	68	14	M6X10	55	32	75	5.5	6.5	45	6	30	G1/8
55.36.15	19.68	15	9.25	6.15	73	18	M8X12	58	40	80	6.5	7.5	55	7	35	G1/8
64.40.15	25.69	15	12	8.03	83	18	M8X12	65	46	90	8.5	9	60	7	40	G1/4
75.48.15	34.36	25	26.8	10.74	116	18	M10X15	96	55	123	10.5	10	75	7	50	G1/4
85.68.25	81.6	25	63.8	25.5	130	25	M12X15	110	75	138	12.5	10	95	8	70	G3/8

Under reserves of technical modifications