

Hydraulic Speed Regulators Série 35 RLU.....



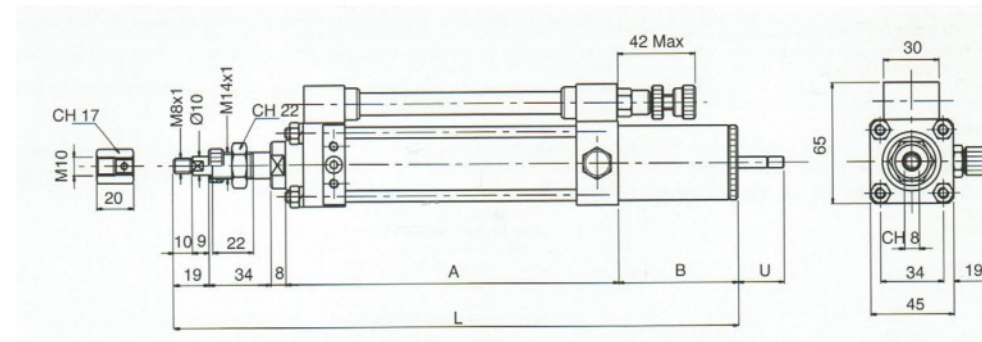
APPLICATIONS:

Any application requiring a control of the movements, the acceleration or stops.

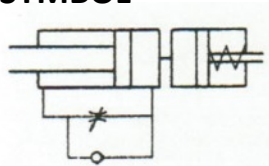
PNEUMATIC COMMAND:

This regulator is coupled with a pneumatic cylinder standard
The regulation of the speed is made by the small thumb wheel which is on the regulator.

This model regulates in Traction (piston rod out regulation)



SYMBOL



| Model | Stroke mm | Dimensions | | | |
|---------------|-----------|------------|----|-----|----|
| | | A | B | L | U |
| 35.RLU.050.NO | 50 | 130 | 65 | 256 | 28 |
| 35.RLU.100.NO | 100 | 180 | | 306 | |
| 35.RLU.150.NO | 150 | 230 | 80 | 371 | 43 |
| 35.RLU.200.NO | 200 | 280 | | 421 | |



Key of codes

Under reserves of technical modifications

