

Hydraulic Speed Regulators Series 35 RPE.....



APPLICATIONS:

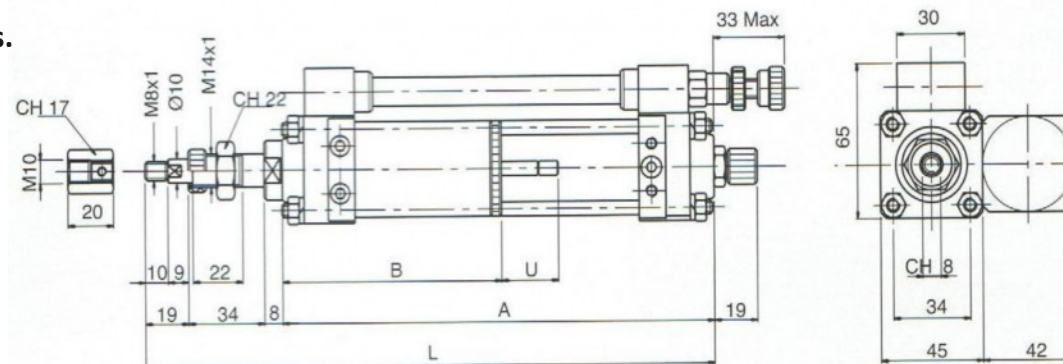
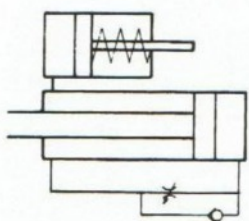
Any application requiring a control of the movements, the acceleration or stops.

PNEUMATIC COMMAND:

This regulator is coupled with a pneumatic cylinder standard
The regulation of the speed is made by the small thumb wheel which is on the regulator.

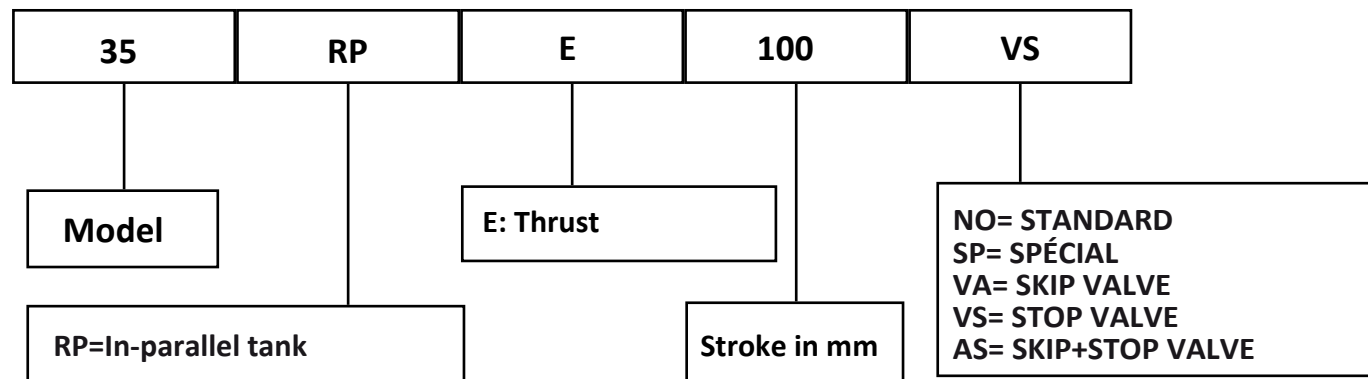
This model regulates in Thrust (piston rod return regulation)

SYMBOL



Model	Stroke mm	Dimensions			
		A	B	L	U
35.RPE.050.NO	50	139	98	200	28
35.RPE.100.NO	100	189		250	
35.RPE.150.NO	150	239	113	300	43
35.RPE.200.NO	200	289		350	

Key of codes



Under reserves of technical modifications