

Hydraulic Speed Regulators Series 35 RPU.....



APPLICATIONS:

Any application requiring a control of the movements, the acceleration or stops.

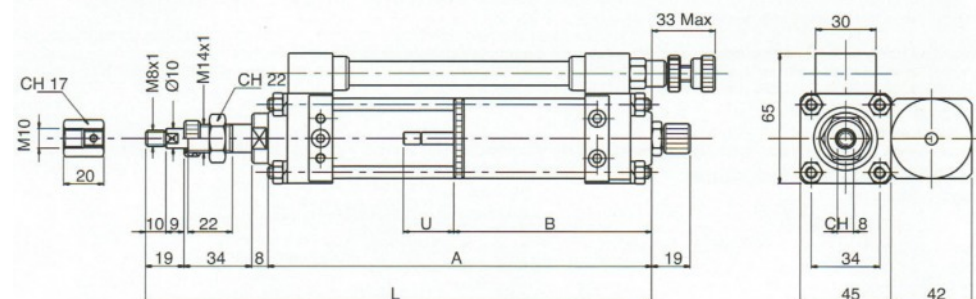
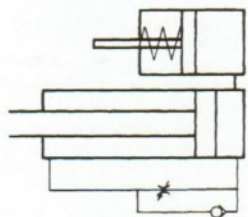
PNEUMATIC COMMAND:

This regulator is coupled with a pneumatic cylinder standard

The regulation of the speed is made by the small thumb wheel which is on the regulator.

This model regulates in Traction (piston rod out regulation)

SYMBOL



Model	Stroke mm	Dimensions			
		A	B	L	U
35.RPU.050.NO	50	139	98	200	28
35.RPU.100.NO	100	189		250	
35.RPU.150.NO	150	239	113	300	43
35.RPU.200.NO	200	289		350	

Key of codes

Under reserves of technical modifications

