

Hydraulic Speed Regulators Series 40 RLU.....



APPLICATIONS:

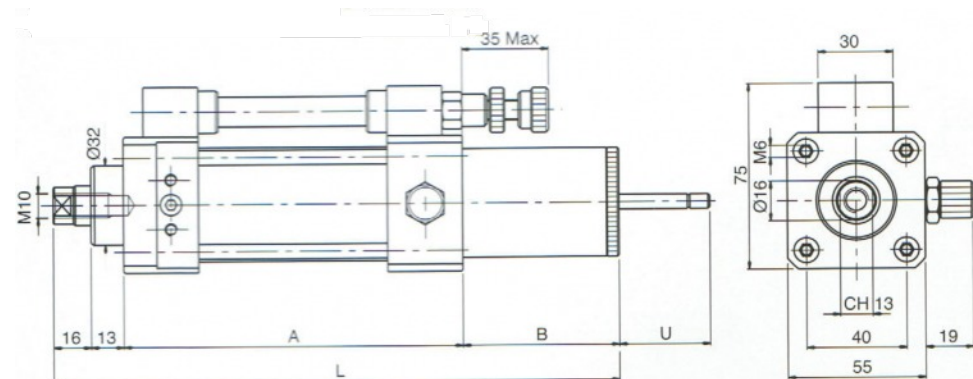
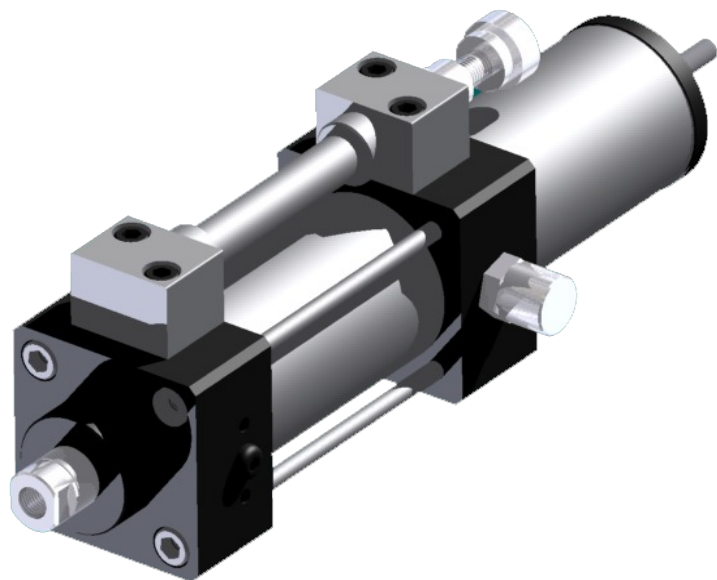
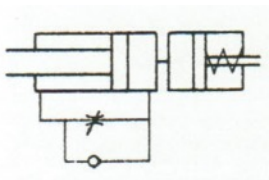
Any application requiring a control of the movements, the acceleration or stops.

PNEUMATIC COMMAND:

This regulator is coupled with a pneumatic cylinder standard
The regulation of the speed is made by the small thumb wheel which is on the regulator.

This model regulates in Traction (piston rod out regulation)

SYMBOL



Model	Stroke mm	Dimensions			
		A	B	L	U
40.RLU.050.NO	50	136	80	245	32
40.RLU.100.NO	100	186		295	
40.RLU.150.NO	150	236	100	365	47
40.RLU.200.NO	200	286		415	
40.RLU.250.NO	250	336	125	490	67
40.RLU.300.NO	300	386		540	
40.RLU.350.NO	350	436	145	610	86
40.RLU.400.NO	400	486		660	

Key of codes

