

Hydraulic Spped Regulators Série 40 RPD.....



APPLICATIONS:

Any application requiring a control of the movements, the acceleration or stops.

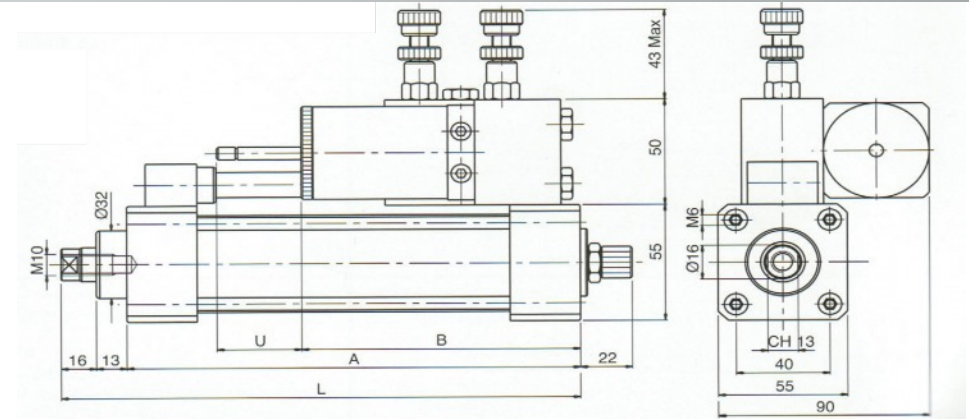
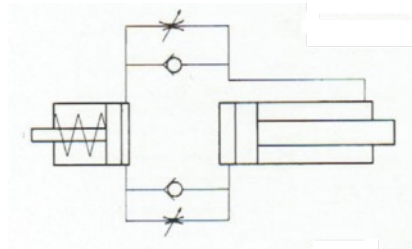
PNEUMATIC COMMAND:

This regulator is coupled with a pneumatic cylinder standard

The regulation of the speed is made by the small thumb wheel which is on the regulator.

This model regulates in dual regulation

SYMBOL



Model	Stroke in mm	Dimensions			
		A	B	L	U
40.RPD.050.NO	50	136	138	165	32
40.RPD.100.NO	100	186		215	
40.RPD.150.NO	150	236	158	265	47
40.RPD.200.NO	200	286		315	
40.RPD.250.NO	250	336	183	365	67
40.RPD.300.NO	300	386		415	
40.RPD.350.NO	350	436	203	465	86
40.RPD.400.NO	400	486		515	

Key of Codes

40	RP	D	100	VS
Model		D: Dual regulation		
	RP=In-parallel tank		Stroke in mm	

NO:Standard
 SS: Stop/Stop
 SE: Stop in-stroke
 SU: Stop out stroke
 AA: Skip in stroke/out stroke
 AE: Skip in-stroke
 AU: Skip out-stroke
 SEAU: Stop in stroke/Skip in-stroke
 SUAE: Stop out-stroke/Skip in-stroke
 ASAS: Skip+Stop in stroke/out stroke

Under reserves of technical modifications