

Pneumo-Hydraulic Power Unit C type frame



Description:

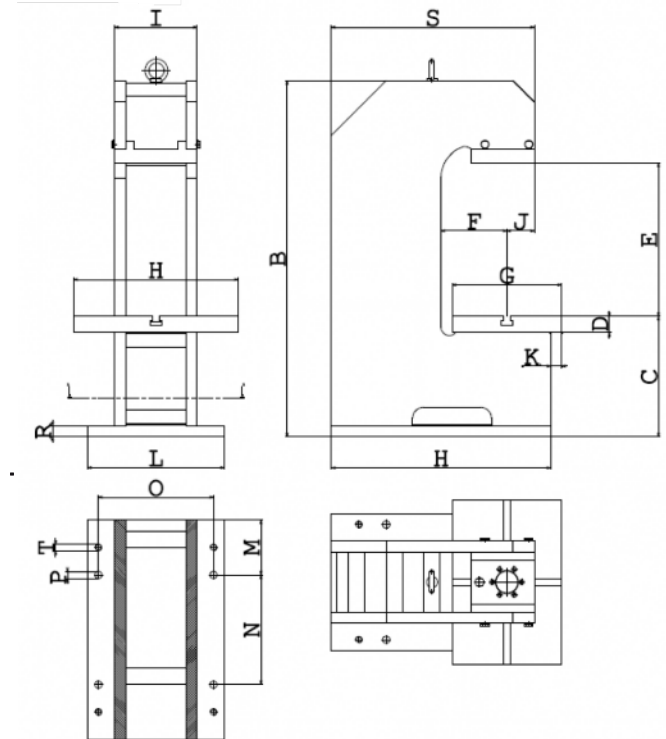
The Structures C-frame allow to have the best functionality of Hydropneumatic power units employ.

The Structures are bound to power units obtaining so pneumatic press speed and hydraulic press force.

The work base on the structure is provided with T rabbet.

The space between the two shoulders allow the passage of loader arms and manipulators, moreover it's allow to reduce the stamp dimensions and the press employment in the automatic production lines and/or bench applications.

All models can be provided with rod anti-rotation device and standard pneumatic system, to satisfy the majority type of uses.



Model	Power kN	A	B	C	D	E	F	G	H	I	J	K	L	M	N	O	P	R	S	T
Press C20	20	400	650	220	30	280	120	200	300	150	50	20	250	100	200	210	13	20	370	M12
Press C40	40	540	875	280	35	369	160	250	350	180	60	45	310	100	170	250	13	25	520	M12
Press C80	80	630	965	340	55	372	190	300	450	260	70	40	390	100	215	330	15	30	590	M14
Press C150	150	710	1135	395	65	450	200	350	500	310	100	35	440	100	510	400	17	30	670	M16

Under reserves of technical modifications