

Hydraulic Speed Regulators Series RLE 25



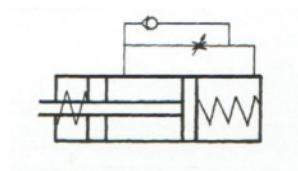
APPLICATIONS:

Any application requiring a control of the movements, the acceleration or stops.

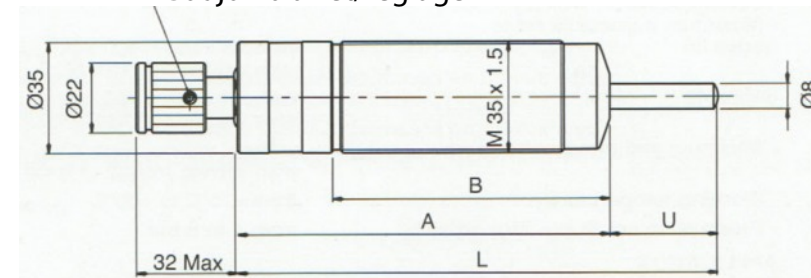
PRINCIPLE:

When the stalk of the regulator is struck by a mass in movement, the piston puts itself in movement and forms an unidirectional valve.

SYMBOL:

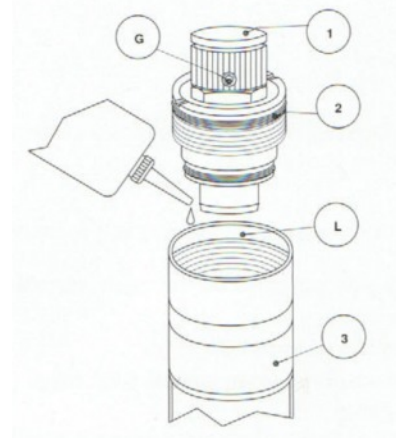


Goujon d'arrêt/réglage



Model	Stroke in mm	Dimensions			
		A	B	L	U
RLE 25.25 A	25	118	88	153	35
RLE 25.50 B	50	164	124	224	60
RLE 25.75 B	75	200	150	293	93

Instruction for oil chagement and restore



- INSTRUCTIONS FOR OIL CHARGEMENT AND RESTORE
- 1° - Unlock 'G' dowel and unscrew the regulation handwheel at max on left (1° pos.).
 - 2° - Unscrew the cap (2° pos.) on left by special wrench or something other and remove the cap.
 - 3° - Fill the chamber (3° pos.) with oil up to the end of thread as indicated with ('L' pos.).
- Using silicone oil type DOW CORNING 200 FLUID cst 250 only is recommended.
 - 4° - Screw the cap (2° pos.) on right; oil excess will come out during screwing.
 - The hydraulic speed regulator is filled now, including the reserve tank.
 - Restore the starting position of the regulation handwheel (1° pos.) and lock slightly the 'G' dowel.