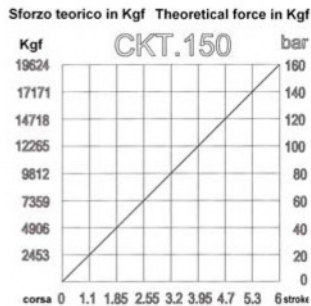
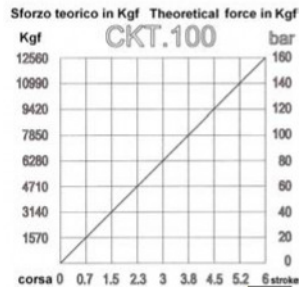
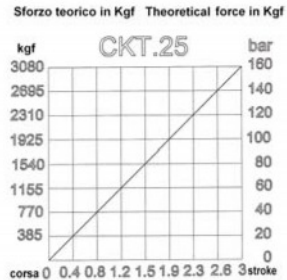


Spring Locking Cylinders Hydraulic Release CKT Series



Diagram



Description:

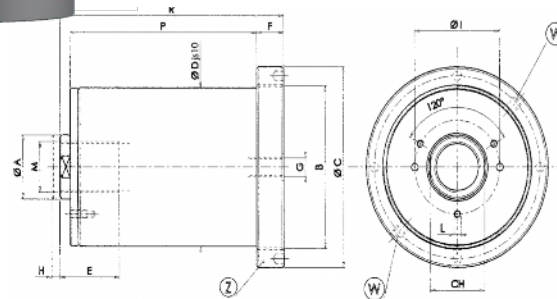
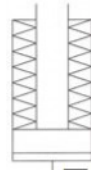
Mechanic locking with cup springs inserted into the cylinder with effect in traction phase.

Hydraulic release and high locking force

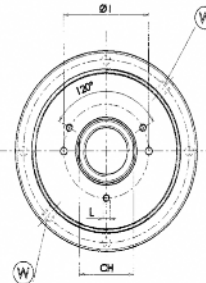
Mounting possible in any position

They are ideals for permanently locking of guides, tailstocks, machine-tool heads and locking of trucks, slides, rotary tables, etc...

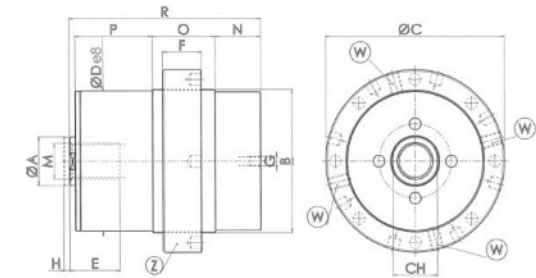
SYMBOL



CKT 25-55-100



Z = Flange caricamento cilindro (regolabile)
Z = Charge cylinder flange (adjustable)
W = Grano fissaggio flangia
W = Fastening flange



CKT 150

Model	Theoretical force kN	Release pressure bar	Stroke H mm	Oil Volume cm3	Piston surface cm2	Dimensions														
						A	B	C	CH	D	E	F	G	I	L	M	N	O	P	R
CKT25	30.80	158	3	5.9	19.62	22	M65x1.5	85	20	59.5	25	16	G1/8"	40		M18			94	110
CKT 55	57.2	140	4.8	21.2	44.17	35	M88x1.5	107	32	84.5	35	16		50	M4	M27x2			110	132
CKT 100	117.78	160	6	47.1	78.53	45	M117x1.5	136	41	113.5	42	16		65	M4	M36x2			150	172
CKT 150	175	160	6	73.6	122.71	50	M145x1.5	185	46	142	52	40				M36x3	47	65	80	198

Under reserves of technical modifications