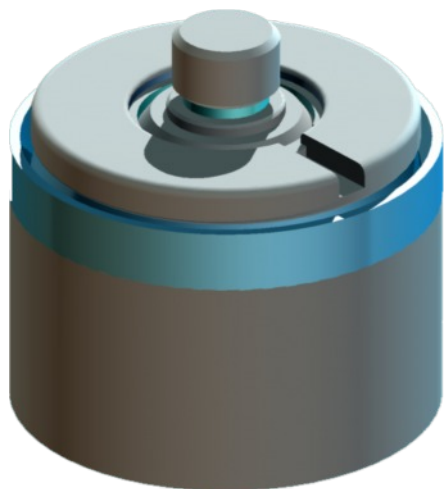


Cartridge Shape Cylinders (Série CCM) Spring Return

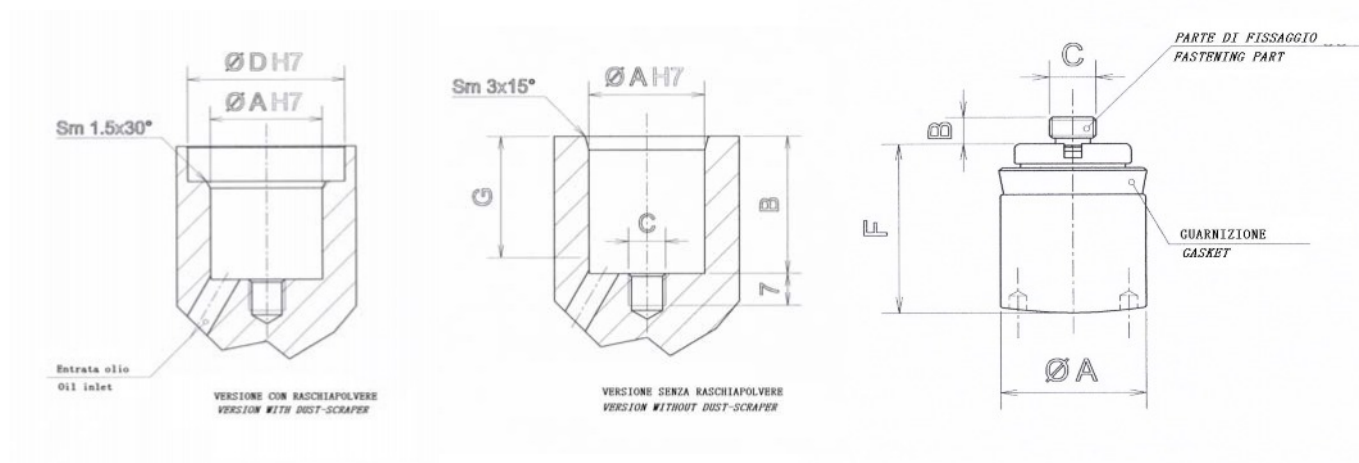


CCM.- .-. -: Without dust-scraper
CCM.- -. -. R: with dust-scraper

Description:

Cylinders without chamber, single acting, very small dimensions, working in thrust. These cylinders are normally sit into manifold, for applications as locking of moulds, trucks, moving heads

NB: Not suitable for end-stroke applications.



Model	Locking force at 320 bar kN	Stroke in mm	Oil Volume cm3	Locking area cm2	Dimensions					
					A	B	C	D	F	G
CKT25	15	5	2.5	4.91	25	5	M8	35	30	26.5
CKT 55	25	8	6.4	8.04	32	8	M10	42	34	30
CKT 100	40	8	10	12.56	40	8	M10	50	36	32

Under reserves of technical modifications